

Capitol Extension

Project Overview and Update

15% Design Public Meeting

May 13, 2023



Welcome!

Please sign in at the registration table.

Please see a staff member if you need Spanish interpretation assistance.

Consulte a un miembro del personal si necesita español asistencia de interpretación.

Please identify the locations of the nearest restrooms and exits.





PROJECT OVERVIEW

SCOPE, COST AND SCHEDULE



Capitol Extension (CAPEX) Corridor



LEGEND

- Valley Metro Rail
- South Central Extension/Downtown Hub
- Capitol Extension
- I-10 West Extension
- Existing Station
- South Central Station
- Capitol Extension Station
- South Central Special Use Platform
- Street closure (new cul-de-sac)

CAPEX Corridor Approvals Completed



Phoenix City Council: November 3, 2021

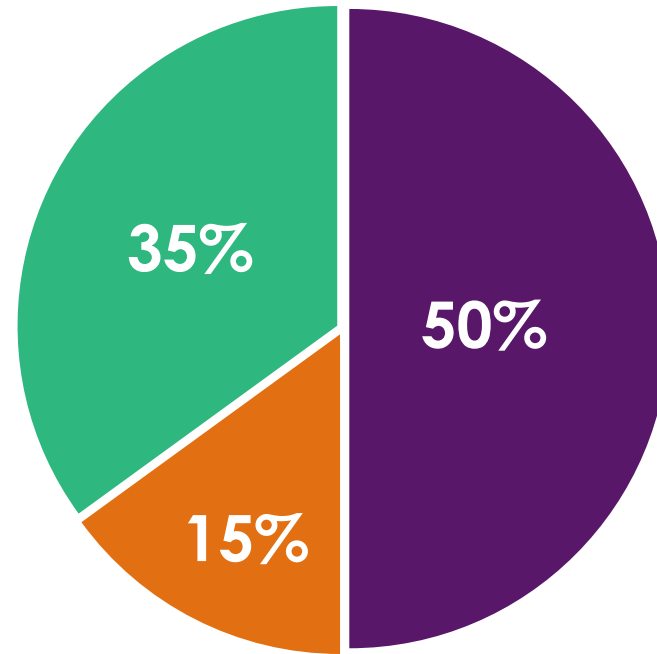
VM Board of Directors: November 18, 2021

MAG Regional Council: January 25, 2023



CAPEX Funding

Funding Breakdown



- Federal
- Regional
- Local

Note: Funding breakdown may change depending on availability of federal dollars.

Federal

- Capital Investment Grant (CIG)
- Congestion Mitigation, Air Quality (CMAQ)

Regional

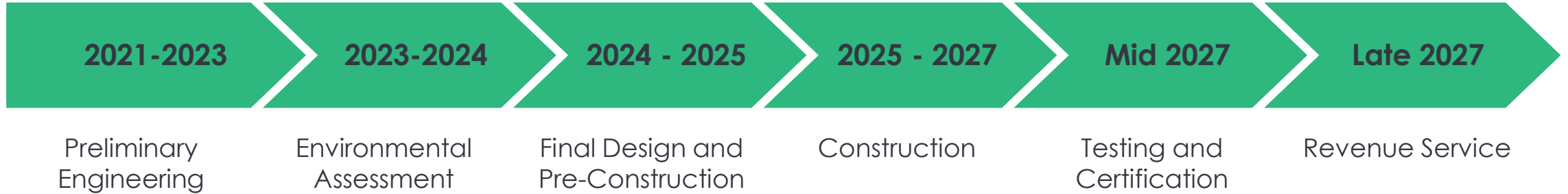
- Public Transportation Fund (PTF)*

**CAPEX is included within Proposition 400.*

Local

- Phoenix Transportation 2050 Sales Tax

CAPEX Project Schedule



..... *Community and Stakeholder Engagement Throughout*



PROJECT DEVELOPMENT

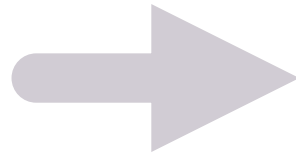
ENGINEERING, ENVIRONMENTAL, DESIGN & CONSTRUCTION



Preliminary Engineering Phases

15% Design

- Light rail tracks
- Stations
- Roadway
- Sidewalks
- Street striping

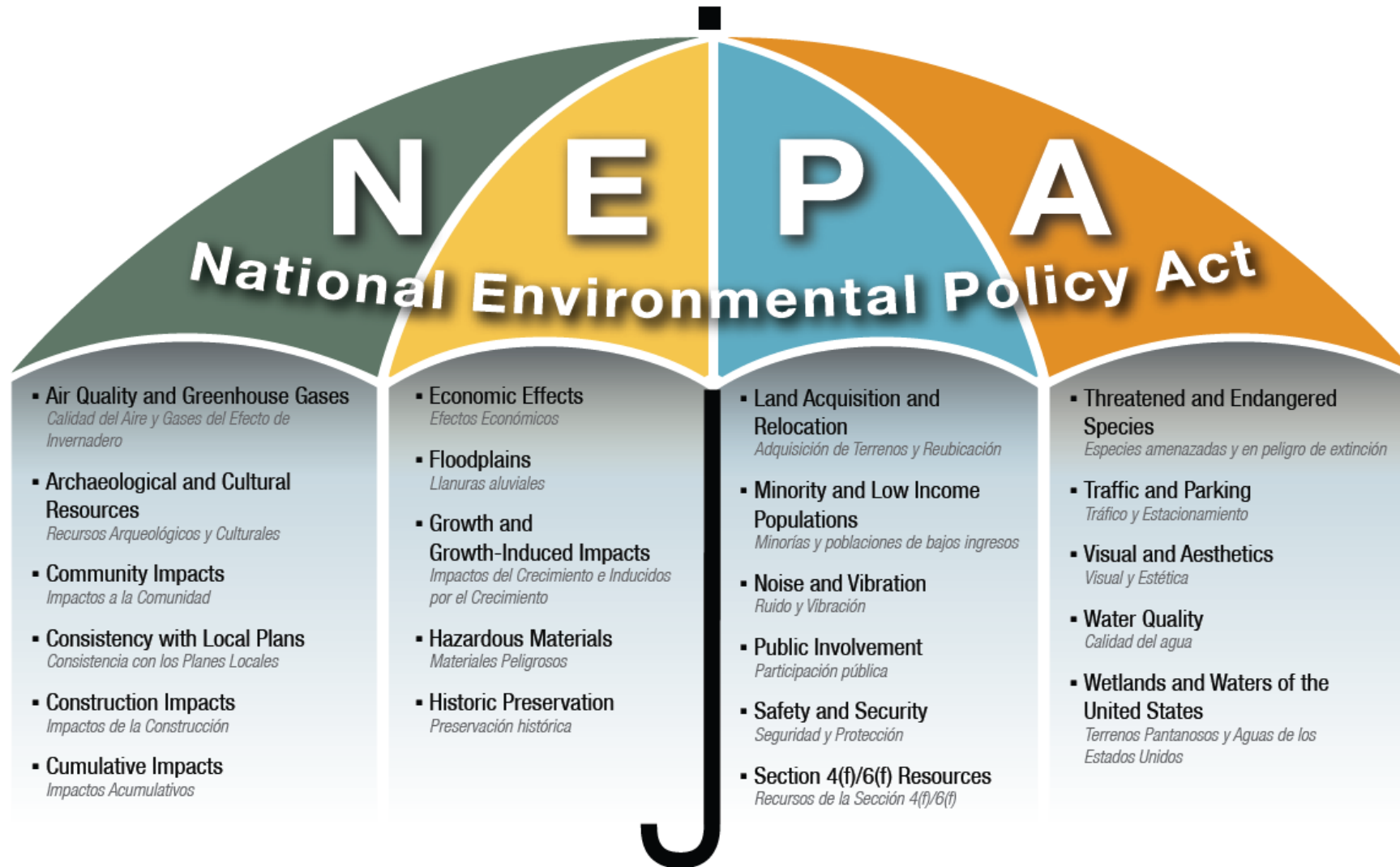


30% Design

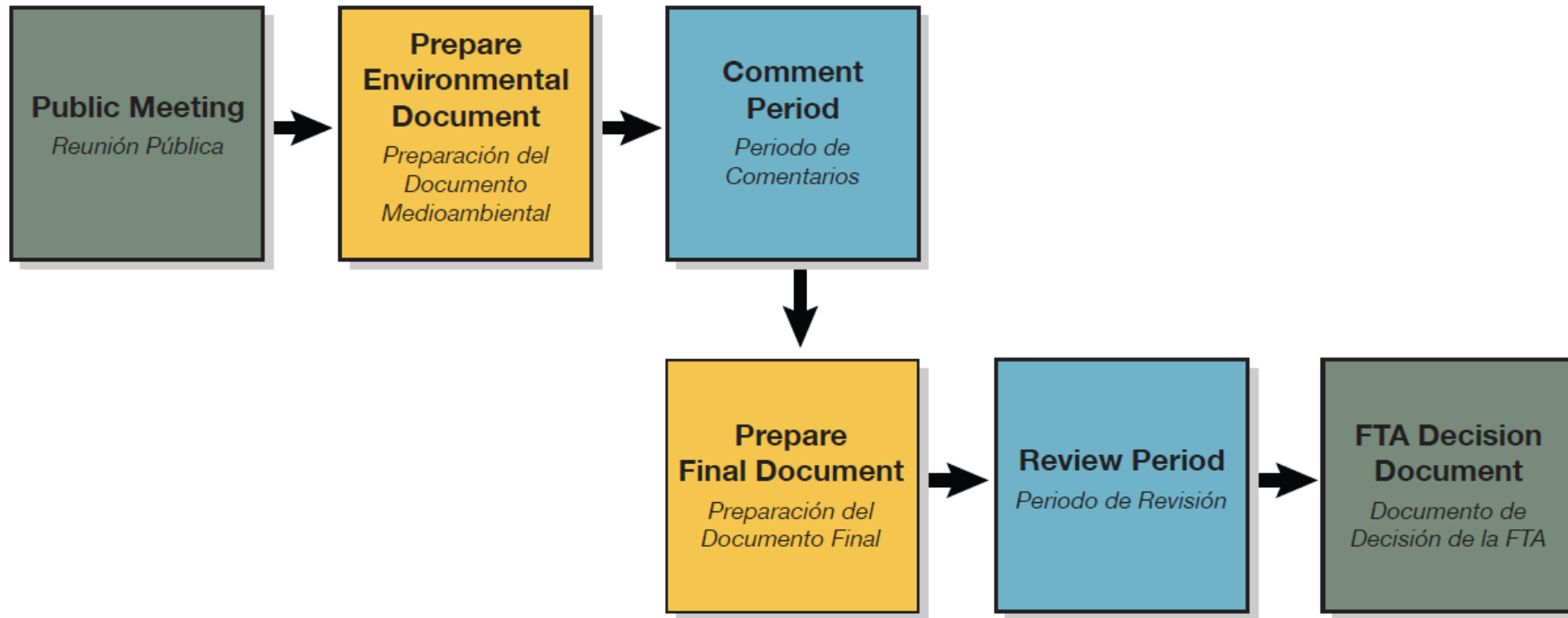
- *Refined Deliverable #1*
- Drainage
- Systems
- Utilities
- Right-of-way
- Traffic signals
- Landscaping



Environmental Assessment



Environmental Review Process



Light Rail Construction Process



**Underground
Utility
Relocation**



**Trackwork
and Street
Rebuilding**



**Sidewalks,
Landscaping
and Signage**



**Stations and
Overhead
Electrification**



**Testing,
Certification
and Operations**

..... *Typically, a 3-to-4 year process*



PUBLIC ART

ARTIST SELECTION PROCESS, COMMUNITY INVOLVEMENT



CAPEX Artist Selection

- **Apply to serve on the Stakeholder Art Review Committee**
 - Online or email
 - Application opens Monday, May 2 to Wednesday June 28, 2023
- **These selection panels:**
 - Select the CAPEX station and traction power substation project artists
 - Assist in their study of the area
 - Review their art project designs
- **For more information, visit valleymetro.org/artsline**



CAPEX Art Development



- Emerging and experienced artists needed for six station platform projects and two Traction Power Substation projects
- **Selected artists will:**
 - Create thoughtful, engaging artwork that reflects the character of the surrounding community by coordinating with area residents and stakeholders

Call to Artists

Opens Thursday, June 1, 2023

Submittals due on Thursday, July 20, 2023





NEXT STEPS

LOOKING TO THE FUTURE



Upcoming Activities



Ongoing: Project design refinements, stakeholder outreach

We Need Your Input!

- Visit the webpage at www.valleymetro.org/capex to:
 - Fill out the Comment Form – submit anytime through May 31, 2023
 - Sign up for future project updates or update your contact information





City of Phoenix

VALLEY METRO

Voter approved

PHX T2050

The image shows a white rectangular graphic centered on a purple-tinted background of a train station. The graphic contains the following elements: a central logo with the text 'CAPITOL EXTENSION' in a black arc above a green circle. Inside the circle is a white house silhouette with a train icon inside. To the left is the City of Phoenix logo (a stylized wave) and the text 'City of Phoenix'. To the right is the Valley Metro logo (a stylized 'M') and the text 'VALLEY METRO'. Below the logo is the text 'Voter approved' and the 'PHX T2050' logo, which includes a small globe icon.

