



CENTRAL MESA

LIGHT RAIL EXTENSION

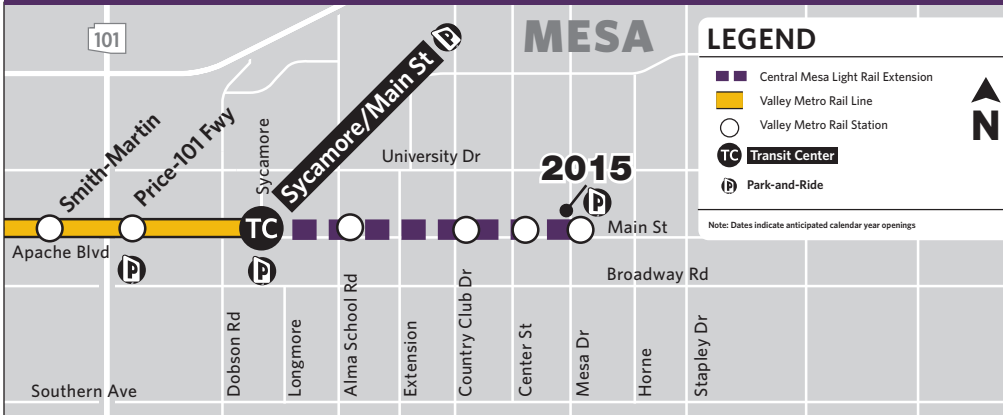
FACT SHEET

AUGUST 2015

DESCRIPTION

The Central Mesa Light Rail Extension serves the growing transit demand in the region. It connects to the downtown Mesa business, arts and entertainment district, Mesa City Plaza, Phoenix Sky Harbor International Airport and special events and activities in adjacent downtown Tempe and Phoenix.

CENTRAL MESA LIGHT RAIL EXTENSION



BUSINESS ASSISTANCE

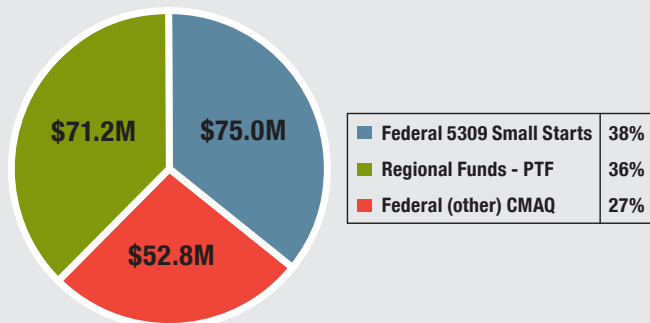
Prior to and during construction, Valley Metro encourages businesses to join the METRO Max Rewards program. Valley Metro promotes the program on the website, social media sites, train wrap, weekly emails to subscribers and at events.

- 161 METRO Max Rewards businesses
- 199 businesses utilized signage/ banner program
- 248 community meetings and events held

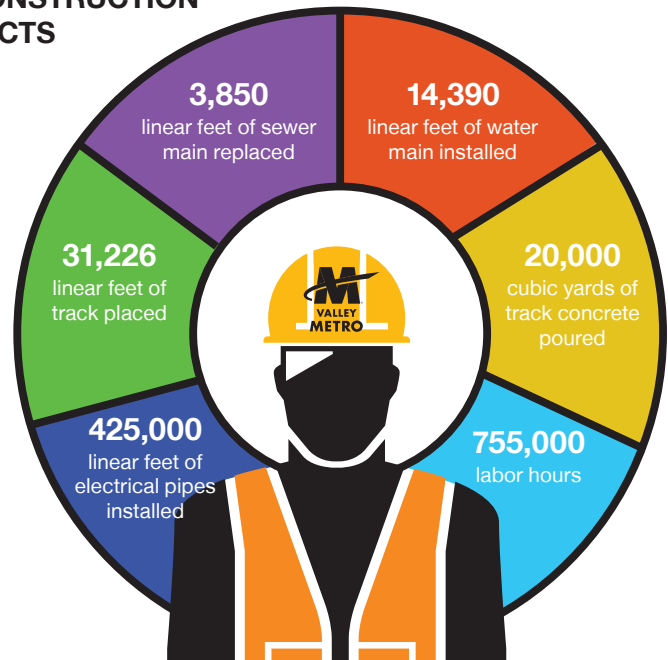
PROJECT OVERVIEW

- Number of miles** – 3.1
- Number of stations** – Four stations at Alma School Road, Country Club Drive, Center Street and Mesa Drive
- Park-and-ride** – 445 spaces at the northeast corner of Main Street and Mesa Drive
- Ridership estimate** – 5,000 riders per day
- Estimate to operate** – \$4 million annually from fares and city of Mesa
- Construction start** – July 2012
- Opening** – August 22, 2015

FUNDING (\$M)–TOTAL \$199M



CONSTRUCTION FACTS



700 jobs generated annually during peak construction

valleymetro.org
facebook.com/valleymetro
@valleymetro

